

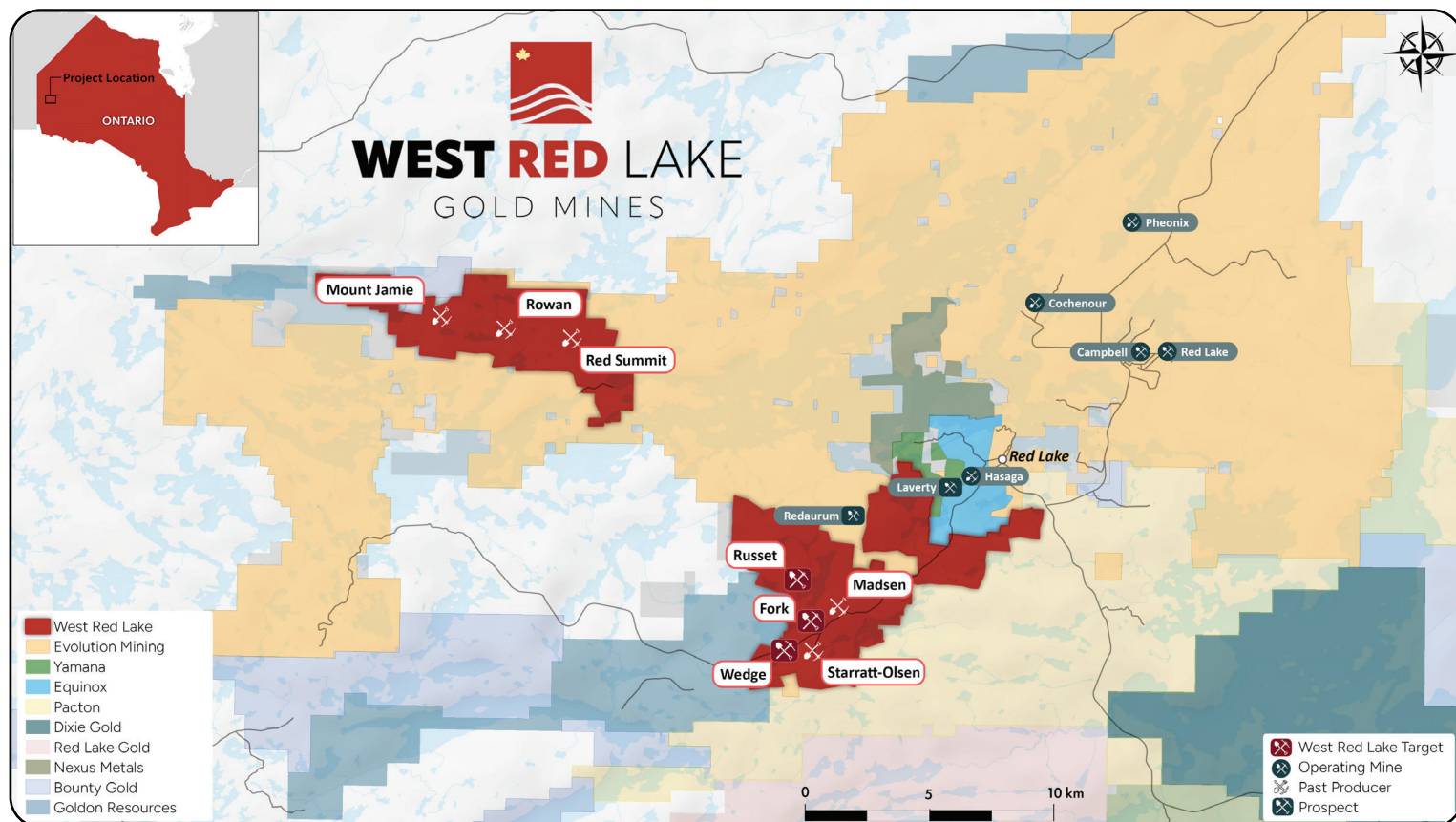


# WEST RED LAKE

## GOLD MINES

TSX.V: **WRLG** OTCQX: **WRLGF** FRA: **UJO**

Advancing our high-grade gold projects, with the relentless pursuit of increasing our resources, in Canada's high grade gold district.



## \$1 Billion

Flagship asset commanded over \$1 Billion in peak market capitalization

## >\$350M

The Madsen project has had over \$350M in investment

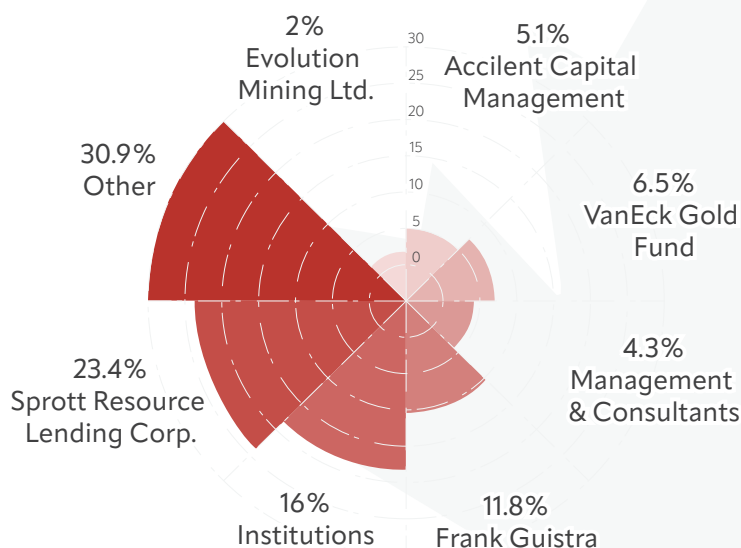
## Potential

Approx 80 square Km of highly prospective ground with tremendous exploration potential

## Capitalization

Issued & Outstanding	184,157,729
Warrants	8,002,903
Options	12,478,475
RSUs	1,910,000
DSUs	700,000
Fully Diluted	207,249,107
52 Week High/Low	0.93/0.31
Market Cap	CAD \$120M
Cash	CAD \$18.1M

As of Aug 24, 2023



# Madsen



- Our fully-permitted, debt-free Madsen gold mine is in one of the richest greenstone belts in Canada
- Brand-new 800+ tonne per day mill, underground mine, tailings facility and water treatment plant
- Potential to unlock synergies with our near-by high-grade Rowan Deposit (0.8 MozAu @ 9.2 g/t)
- Potentially transferable Tax assets
- 2.1M ounces of high grade gold resources.
- Opportunity to further de-risk asset with systematic underground development and drilling with the purpose of increasing confidence in high-grade portions of the resource

	Moz	Au g/t
<b>Indicated</b>	<b>1.7</b>	<b>7.4</b>
<b>Inferred</b>	<b>0.4</b>	<b>6.3</b>

# Rowan



- 100% owned 31 sq km land package and operated by West Red Lake Gold Mines. Comprised of 3 past producing mines. (Rowan, Mt. Jamie, Red Summit)
- NT Zone target with bulk tonnage potential similar to the Dixie project (Great Bear Resources)
- Confirmed mineralized strike length of over 1.5 Km and open
- Current inferred resources 827,462 oz Au @ 9.2 g/t at Rowan Mine Au extending to surface from 600 m which remain open in all directions and depth

	Moz	Au g/t
<b>Inferred</b>	<b>0.8</b>	<b>9.2</b>

Our goal is to continue to build high-grade resources in one of the richest gold districts in Canada.

- **Frank Giustra**  
Major Shareholder



*Note: Indicated and Inferred Mineral Resources are not Mineral Reserves Mineral resources which are not mineral reserves do not have demonstrated economic viability There has been insufficient exploration to define the inferred resource as an indicated or measured mineral resource, and it is uncertain if further exploration will result in upgrading the resource to a measured resource category There is no guarantee that any part of the mineral resource discussed herein will be converted into a mineral reserve in the future.*