



WEST RED LAKE GOLD MINES INC

NEWS RELEASE

FOR IMMEDIATE RELEASE
December 6, 2016
Toronto, Ontario

WEST RED LAKE GOLD INTERSECTS HIGH GRADE GOLD MINERALIZATION AT RED LAKE

West Red Lake Gold Mines Inc. (“West Red Lake Gold” or the “Company”) (CSE: RLG) (FWB: HYK) (OTCQB: RLGMF) intersected high grade gold mineralization during its recently completed diamond drill program on the 3100 hectare West Red Lake Project located in the prolific Red Lake Gold District of Northwest Ontario. The exploration program focused on the expansion of the Rowan Mine Zones to depth and the Structural Intersection area.

Highlights include (see details in table below):

Structural Intersection

- 26.85 grams per tonne of gold (“gpt Au”) over 1.00 metre (“m”)

Rowan Mine

- 8.74 gpt Au over 3.50 m, including 23.01 gpt Au over 1.00 m
- 8.97 gpt Au over 1.20 m
- 1.88 gpt Au over 12.3 m, including 24.23 gpt Au over 0.50 m
- 11.66 gpt Au over 1.10 m

The drill program consisted of 2811 m of drilling in eight holes. Six holes tested the down dip extension of the Rowan Mine Zones and two holes further tested the potential of the Structural Intersection area.

The six holes at the Rowan Mine were designed to expand the western half of the Rowan Mine resource to depth. Five of the holes were drilled to depths ranging between 250 m and 400 m below surface and the sixth hole was drilled to a depth of approximately 100 m. The intercepts are 50 to 100 m below previous intercepts in their vicinity within the Rowan Mine Zones.

Two holes were drilled on the west side of the Structural Intersection area and to the south of the location of hole RLG 16-31 (results reported on September 8, 2016 included 50.41 gpt Au over 1.5 m and 22.72 gpt Au over 1.5 m).

Mr. John Kontak, President of West Red Lake Gold Mines stated “We are very pleased with the results of this recently completed drill program on our Red Lake gold property. We were successful in intersecting additional high grade gold mineralization in the Structural Intersection area of the property and in expanding the gold zones to depth in the western portion of the Rowan Mine area. With these positive results, we continue to believe that the property holds significant exploration potential and that additional follow-up drilling is warranted.”

The next phase of drilling on the property is planned to commence in January, 2017. This drilling will focus on expanding the eastern portion of the Rowan Mine to depth and along strike from the positive drill results reported on February 6, 2015 which included 29.97 gpt Au over 4.0 m and 162.0 gpt Au over 1.50 m. Additional drilling is also planned to target the eastern side of the Structural Intersection area.

The Structural Intersection area is interpreted to be 1.3 km in width in an east-west direction and 2.0 km in length. The Structural Intersection area is located where the east-west trending Pipestone Bay-St Paul Deformation Zone (the “PBSP Zone”) intersects with the regional scale, northeast trending, Golden Arm Structure. The PBSP Zone hosts the three former mines located on the West Red Lake Project including the Rowan Mine.

The NT Zone is a volcanic unit which hosts multiple high grade gold zones and trends on the property from the southwest and intersects with the PBSP Zone immediately to the west of the Golden Arm Structure and then appears to fold to the west along the north side of the PBSP Zone. The fold in the NT Zone is also referred to as the Hinge Zone.

The Structural Intersection target area is believed to hold compelling exploration potential as the intersecting structures provide a geological environment for the occurrence of significant gold zones.

Previously reported Hole RLG 16-31 was drilled west to east into the NT Zone and was located near the northern limit of the Structural Intersection area. The design of Hole RLG 16-31 was provided by Earth Science Services Corp’s Ultra Sonic AMT geophysical system. None of the holes reported in this eight hole program were targeted using the Ultra Sonic AMT system. Earth Sciences Services has provided the Company with three proposed holes into the southeastern portion of the Structural Intersection area. The southeastern portion of this target area is covered

by crown claims and the Company is applying to the Ministry of Northern Development and Mines for a drill permit for the area of the crown claims.

Technical Information

The technical information presented in this news release has been reviewed and approved by Kenneth Guy, P.Geo., a consultant to West Red Lake Gold and the Qualified Person for exploration at the West Red Lake Project, as defined by National Instrument 43-101 "Standards of Disclosure for Mineral Projects" ("NI 43-101").

All drilling was completed using NQ size core. Gold analysis of the samples collected by West Red Lake Gold were assayed by SGS Laboratories Ltd. Analysis consisted of a fire assay of a 30-gram sample with an atomic absorption finish. Samples assaying over 10.0 gpt Au are re-assayed with gravimetric finish. Samples noted to contain visible gold are analyzed via total metallic assay method. A rigorous Quality Control and Assurance Program is in place using control samples including blanks and standards.

West Red Lake Gold Mines Inc. is a Toronto-based minerals exploration company focused on gold exploration and development in the prolific Red Lake Gold District of Northwest Ontario, Canada. The Red Lake Gold District is host to some of the richest gold deposits in the world and has produced 30 million ounces of gold from high grade zones. The Company has assembled a significant property position totalling 3100 hectares in west Red Lake (the "West Red Lake Project") which contains three former gold mines. The Mount Jamie Mine and Red Summit Mine properties are 100% owned by the Company and the Rowan Mine property is held in a 60%-owned joint venture with Red Lake Gold Mines, a partnership of Goldcorp Inc. and Goldcorp Canada Ltd. The West Red Lake Project property covers a 12 kilometre strike length along the Pipestone Bay-St Paul Deformation Zone and the Company plans to continue to explore the property both along strike and to depth. To find out more about West Red Lake Gold Mines, please visit our website at <http://www.westredlakegold.com>.

For more information, please contact: John Kontak, President Phone: 416-203-9181 Email: jkontak@rlgold.ca

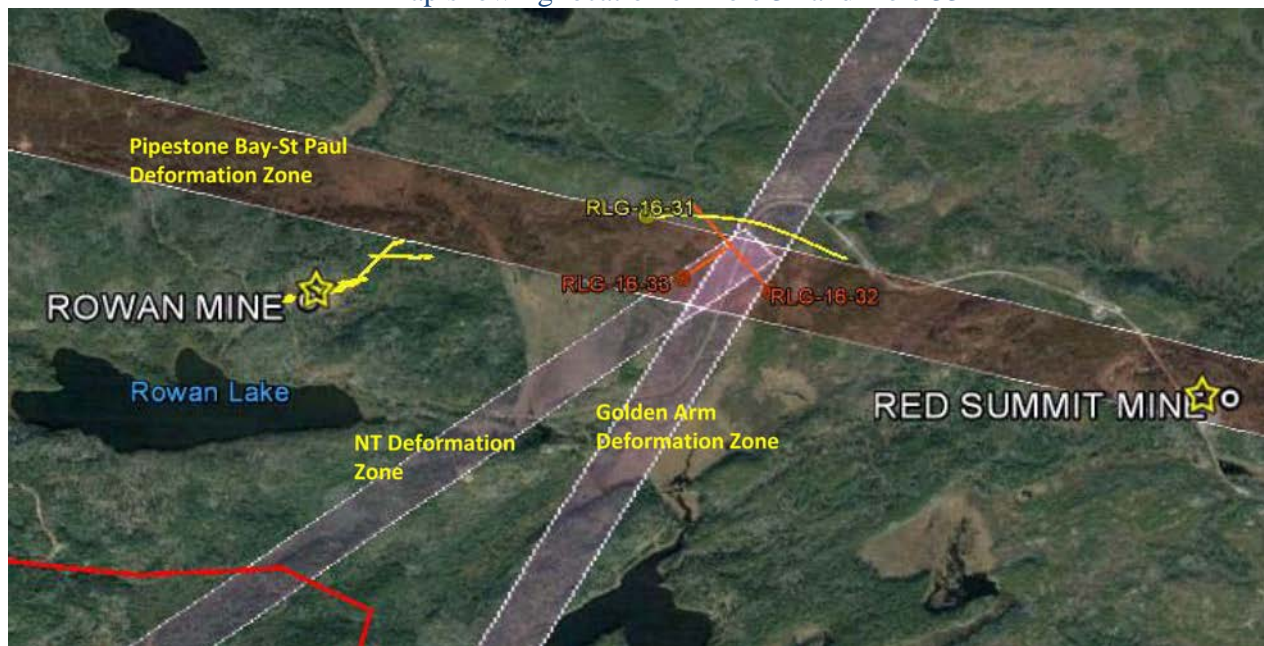
The Canadian Securities Exchange has neither approved nor disapproved the contents of this news release. Certain statements contained in this news release constitute "forward looking statements". When used in this document, the words "anticipated", "expect", "estimated", "forecast", "planned", and similar expressions are intended to identify forward looking statements or information. These statements are based on current expectations of management, however, they are subject to known and unknown risks, uncertainties and other factors that may cause actual results to differ materially from the forward-looking statements in this news release. Readers are cautioned not to place undue reliance on these statements. West Red Lake Gold does not undertake any obligation to revise or update any forward- looking statements as a result of new information, future events or otherwise after the date hereof, except as required by securities laws.

West Red Lake Project Fall 2016 Diamond Drill Hole Table

Hole #	UTM Easting	UTM Northing	UTM ele	dip	Az	length		from	to	m	Au-gpt
Structural Intersection											
RLG-16-32	423226	5657774	358	-45	310	498		152.3	153.3	1.0	1.17
								325.5	326.0	0.5	3.47
								404.7	405.6	0.9	1.78
								455.0	456.0	1.0	1.32
RLG-16-33	422906	5657826	378	-45	60	246		51.4	52.4	1.0	26.85
							incl	51.4	51.9	0.5	51.32
Rowan Mine											
RLG-16-34	421882	5657652	378	-48	355	465		262.5	263.0	0.5	1.20
								303.5	307.0	3.5	8.74
							incl	303.5	304.5	1.0	23.01
								309.0	310.5	1.5	1.42
								341.0	344.2	3.2	1.13
RLG-16-35	421917	5657747	375	-50	357	351		173.5	174.0	0.5	2.43
								240.7	241.9	1.2	8.97
							incl	241.4	241.9	0.5	19.85
RLG-16-36	421754	5657653	380	-58	357	474		261.0	262.0	1.0	2.58
								303.0	304.5	1.5	3.19
							incl	336.2	340.0	3.8	3.56
							incl	336.2	336.7	0.5	24.23
							and	345.0	348.5	3.5	2.33
								361.0	361.5	0.5	4.22
								364.0	365.0	1.0	3.16
								389.0	390.0	1.0	2.55
								463.0	463.5	0.5	2.81
RLG-16-37	421545	5657684	390	-45	357	276		nsv			
RLG-16-38	421480	5657723	393	-48	355	351		40.8	41.9	1.1	11.66
							incl	41.4	41.9	0.5	24.95
								249.0	249.5	0.5	6.47
RLG-16-39	421561	5657765	401	-48	360	150		48.3	50.1	1.8	1.06
								80.0	81.0	1.0	1.19
8 Holes						2811	m				

Intervals reported here are core lengths. True widths are not known at this time. All depths are reported as down hole.

Map showing location of Hole 32 and Hole 33



Location of Holes drilled into Rowan Mine Zones

