



NEWS RELEASE

**CNQ: HYLK
FRANKFURT: HYK**

**HY LAKE GOLD INTERSECTS 2.8 METRES OF 22.54 GRAMS PER TONNE GOLD
AT RED LAKE PROPERTY**

FOR IMMEDIATE RELEASE, January 16, 2008 – Toronto, Ontario.

Hy Lake Gold Inc. (CNQ: HYLK; FRANKFURT: HYK) (“Hy Lake Gold” and “the Company”) is pleased to announce initial drill results from forty-two exploration drill holes recently completed at its west Red Lake property package, including the Rowan Property optioned from Red Lake Gold Mines, a general partnership of Goldcorp Inc. (TSX: G; NYSE: GG) and Goldcorp Canada Ltd. (see news release dated December 13, 2007), in Red Lake, Ontario. The results confirm the potential for gold mineralizations at depth with drill holes intercepting gold mineralization as deep as 525 metres downhole.

Selected Highlights:

- **HYR-07-02 assayed 22.54 gpt (grams Au per tonne) over 2.80 m (metres) including 118.54 gpt over 0.50 m**
- **HYR-07-03 assayed 58.40 gpt over 0.50 m, 67.30 gpt over 1.00 m and 15.68 gpt over 1.00 m in three separate veins**
- **HY-07-19 assayed 6.55 gpt over 2.10 m including 10.70 gpt over 1.00 m**

The Company is drilling the steeply dipping gold mineralization which trends east-west for 10 kms on the 100% controlled Mount Jamie Property and adjacent Rowan Property on which Hy Lake Gold recently acquired an option to earn a 60% interest from Red Lake Gold Mines. The program is targeted on following the gold mineralization associated with the favorable Red Lake geology along strike to depths below previous drilling.

The following table reports the significant results of the first 3 holes from the 8-hole 2007 drilling program on the Rowan Property. Assays are pending for the remaining holes and will be released upon receipt of the final assay results.

Hole	From (m)	To (m)	Width (m)	Gold (gpt)	Width (ft)	Gold (opt)
HYR-07-01	399.00	400.00	1.00	1.84	3.28	0.05
	403.00	404.00	1.00	0.96	3.28	0.03
	409.00	410.00	1.00	1.37	3.28	0.04
	414.00	415.50	1.50	6.11	4.92	0.18
	487.00	488.00	1.00	1.49	3.28	0.04
	492.00	517.00	11.50	1.72	37.73	0.05
including	492.00	492.50	0.50	12.03	1.64	0.35
and	503.00	504.00	1.00	9.74	3.28	0.28
and	512.00	513.00	1.00	2.72	3.28	0.08
	525.50	526.00	0.50	14.80	1.64	0.43

HYR-07-02	109.10	110.10	1.00	1.08	3.28	0.03
	176.70	177.10	0.40	1.46	1.31	0.04
	185.70	186.60	0.90	1.11	2.95	0.03
	225.10	225.60	0.50	32.80	1.64	0.96
	233.00	239.40	6.40	1.73	21.00	0.05
including	233.00	234.00	1.00	1.01	3.28	0.03
and	234.60	235.10	0.50	12.10	1.64	0.35
and	235.10	236.00	0.90	1.23	2.95	0.04
and	236.00	236.80	0.80	1.90	2.62	0.06
and	238.90	239.40	0.50	1.07	1.64	0.03
	277.00	278.00	1.00	1.86	3.28	0.05
	291.40	294.20	2.80	22.54	9.19	0.66
including	291.40	291.90	0.50	3.42	1.64	0.10
and	291.90	292.40	0.50	118.00	1.64	3.44
and	292.90	293.90	1.00	1.69	3.28	0.05
and	293.90	294.20	0.30	1.98	0.98	0.06
HYR-07-03	247.50	247.90	0.40	1.02	1.31	0.03
	259.00	259.50	0.50	58.40	1.64	1.70
	267.00	268.00	1.00	67.30	3.28	1.96
	299.50	300.50	1.00	15.68	3.28	0.46
	322.00	323.00	1.00	2.16	3.28	0.06
	349.50	351.00	1.50	1.80	4.92	0.05
	405.80	406.30	0.50	1.96	1.64	0.06
	412.40	412.90	0.50	2.36	1.64	0.07

The following table reports the significant results of the 39-hole 2007 drilling program on the Mount Jamie Property, adjacent to and west of the Rowan Property.

Hole	From (m)	To (m)	Width (m)	Gold (gpt)	Width (ft)	Gold (opt)
<i>HY-07-02</i>	<i>54.00</i>	<i>55.70</i>	<i>1.70</i>	<i>1.92</i>	<i>5.58</i>	<i>0.06</i>
<i>including</i>	<i>54.00</i>	<i>55.00</i>	<i>1.00</i>	<i>1.50</i>	<i>3.28</i>	<i>0.04</i>
<i>and</i>	<i>55.00</i>	<i>55.70</i>	<i>0.70</i>	<i>2.70</i>	<i>2.30</i>	<i>0.08</i>
<i>HY-07-03</i>	<i>41.00</i>	<i>42.50</i>	<i>1.50</i>	<i>35.10</i>	<i>4.92</i>	<i>1.02</i>
<i>including</i>	<i>41.00</i>	<i>41.50</i>	<i>0.50</i>	<i>0.96</i>	<i>1.64</i>	<i>0.03</i>
<i>and</i>	<i>41.50</i>	<i>42.00</i>	<i>0.50</i>	<i>94.21</i>	<i>1.64</i>	<i>2.75</i>
<i>HY-07-05</i>	<i>34.50</i>	<i>38.00</i>	<i>3.50</i>	<i>37.70</i>	<i>11.48</i>	<i>1.10</i>
<i>including</i>	<i>34.50</i>	<i>35.00</i>	<i>0.50</i>	<i>29.43</i>	<i>1.64</i>	<i>0.86</i>
<i>and</i>	<i>35.00</i>	<i>35.50</i>	<i>0.50</i>	<i>9.15</i>	<i>1.64</i>	<i>0.27</i>
<i>and</i>	<i>36.00</i>	<i>36.50</i>	<i>0.50</i>	<i>194.74</i>	<i>1.64</i>	<i>5.68</i>
<i>and</i>	<i>37.00</i>	<i>38.00</i>	<i>1.00</i>	<i>2.90</i>	<i>3.28</i>	<i>0.08</i>
<i>HY-07-06</i>	<i>144.50</i>	<i>147.00</i>	<i>2.50</i>	<i>0.29</i>	<i>8.20</i>	<i>0.01</i>
	<i>144.5</i>	<i>145.5</i>	<i>1.00</i>	<i>0.27</i>	<i>3.28</i>	<i>0.01</i>
	<i>146.0</i>	<i>147.0</i>	<i>1.00</i>	<i>0.45</i>	<i>3.28</i>	<i>0.01</i>
<i>HY-07-07</i>	<i>83.35</i>	<i>83.55</i>	<i>0.20</i>	<i>2.15</i>	<i>0.66</i>	<i>0.06</i>
	<i>96.40</i>	<i>96.60</i>	<i>0.20</i>	<i>2.33</i>	<i>0.66</i>	<i>0.07</i>
<i>HY-07-08</i>	<i>27.70</i>	<i>28.70</i>	<i>1.00</i>	<i>31.79</i>	<i>3.28</i>	<i>0.93</i>
<i>HY-07-10</i>	<i>38.50</i>	<i>39.50</i>	<i>1.00</i>	<i>1.28</i>	<i>3.28</i>	<i>0.04</i>
<i>including</i>	<i>38.50</i>	<i>39.00</i>	<i>0.50</i>	<i>2.19</i>	<i>1.64</i>	<i>0.06</i>
	<i>68.80</i>	<i>70.50</i>	<i>1.70</i>	<i>1.66</i>	<i>5.58</i>	<i>0.05</i>
<i>including</i>	<i>69.50</i>	<i>69.70</i>	<i>0.20</i>	<i>1.80</i>	<i>0.66</i>	<i>0.05</i>

<i>and</i>	69.70	70.00	0.30	1.12	0.98	0.03
<i>and</i>	70.00	70.25	0.25	5.10	0.82	0.15
<i>and</i>	70.25	70.50	0.25	3.10	0.82	0.09
	83.00	83.50	0.50	1.61	1.64	0.05
HY-07-11	58.50	59.50	1.00	0.50	3.28	0.01
	145.50	146.00	0.50	0.52	1.64	0.02
HY-07-12	77.00	77.60	0.60	2.33	1.97	0.07
	77.60	78.15	0.55	2.83	1.80	0.08
HY-07-13	139.30	140.00	0.70	0.87	2.30	0.03
HY-07-14	46.75	47.70	0.95	11.28	3.12	0.33
	46.75	47.05	0.30	34.64	0.98	1.01
	122.45	124.00	1.55	0.75	5.09	0.02
<i>including</i>	123.45	124.00	0.55	1.15	1.80	0.03
HY-07-15	107.95	108.95	1.00	0.67	3.28	0.02
	109.45	110.00	0.55	3.08	1.80	0.09
	113.65	114.40	0.75	0.72	2.46	0.02
	113.65	114.10	0.45	0.68	1.48	0.02
	114.10	114.40	0.30	0.77	0.98	0.02
HY-07-17	10.00	10.30	0.30	8.57	0.98	0.25
HY-07-18	28.50	29.90	1.40	1.93	4.59	0.06
	78.60	78.90	0.30	4.76	0.98	0.14
HY-07-19	21.50	23.30	1.80	0.93	5.91	0.03
	41.50	43.60	2.10	6.57	6.89	0.19
<i>including</i>	41.50	42.50	1.00	10.70	3.28	0.31
<i>and</i>	42.50	43.60	1.10	2.77	3.61	0.08
HY-07-24	164.00	164.30	0.30	1.24	0.98	0.04
HY-07-30	57.60	58.00	0.40	0.65	1.31	0.02
	124.90	125.20	0.30	2.10	0.98	0.06
HY-07-31	151.40	151.80	0.40	1.29	1.31	0.04
HY-07-34	349.50	349.80	0.30	0.84	0.98	0.02
HY-07-36	55.20	55.50	0.30	0.53	0.98	0.02
HY-07-37	227.20	228.00	0.80	3.69	2.62	0.11
HY-07-39	431.60	432.00	0.40	1.17	1.31	0.03

Notes:

- Lengths reported are core intersection lengths and do not represent true widths.
- It is anticipated that true width estimates will be made possible after additional drilling.
- Conversion: grams per tonne times 0.0292 equals troy ounce per short ton.
- *Previously released results*

Drill holes tested east - west trending gold zones that are situated within the geological environment that hosts the gold deposits in Red Lake. The Red Lake greenstone belt is host to some of the richest gold deposits in the world. The Red Gold Camp has produced more than 24 million ounces of gold to date (source: Ontario Ministry of Northern Development and Mines).

The Hy Lake Gold properties lie on the Pipestone Bay-St. Paul's Bay Deformation zone and host the past producing Rowan Lake Gold Mine, the past producing Mount Jamie Mine (Hy Lake Gold) and surround the past producing Red Crest Mine (Claude Resources). The properties, which have been explored only to very shallow depths, are underlain by the same geology and structure that hosts these three past producers and have been subjected to only limited underground exploration. The properties host numerous gold

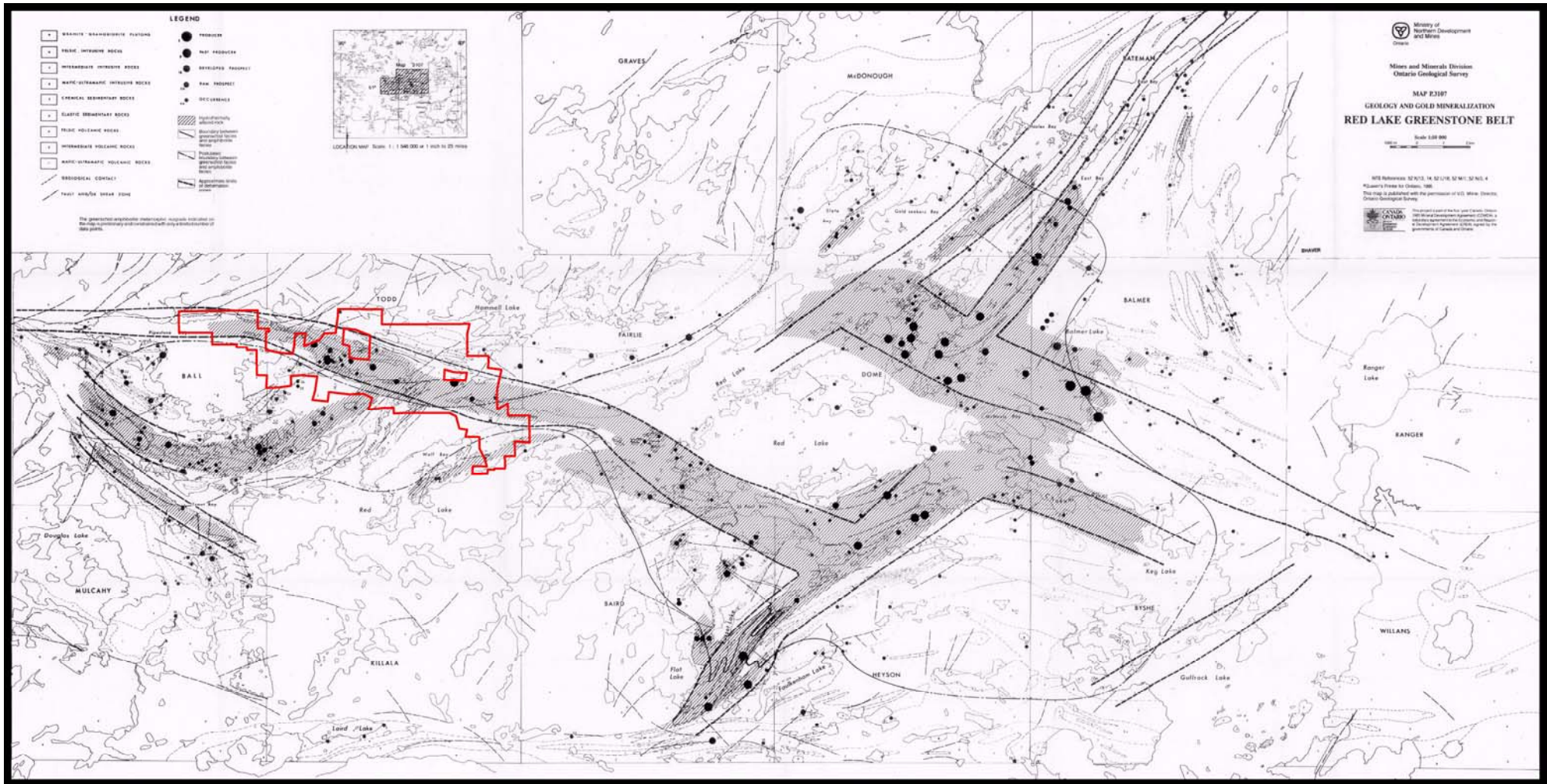
occurrences which have seen limited drill testing and potential exists to expand upon these gold mineralized zones both along strike and at depth.

All exploration work was conducted under Kenneth Guy, P. Geo., designated Qualified Person for HY Lake Gold, who has reviewed the this press release. Gold analysis of samples collected by HY Lake Gold were assayed by ALS Chemex, Vancouver, Canada. Analysis consisted of a fire assay of a 50-gram sample with an ICP-AES finish with a re-assay and gravimetric finish on samples assaying over 10 grams per tonne. Samples noted to contain visible gold are analyzed via total metallic assay method. A rigorous Quality Control and Assurance program (QA/QC) is in place, using laboratory control samples including Blanks, Standards and duplicate checks.

Hy Lake Gold is a junior exploration company focused on the gold exploration and development business in the prolific Red Lake mining district of northwestern Ontario, Canada. Hy Lake Gold has assembled two significant adjacent property packages totalling approximately 3,000 hectares in west Red Lake. The properties cover a 10 kilometre distance along the west Red Lake Trend, that contains 3 former producing gold mines. The Company intends to explore these properties both along strike and at depth. To find out more about Hy Lake Gold Inc. (CNQ: HYLK; FRANKFURT: HYK) visit our website at www.hylake.com.

There are 19,330,896 shares of the Company outstanding.

On behalf of the board:
Mr. Robert B. Seitz, President
office @ hylake.com



Hy Lake Gold Properties on the Pipstone Bay – St. Paul’s Bay Deformation Zone
Ontario Geological Survey Map P.3107 – Geology and Gold Mineralization, Red Lake Greenstone Belt